

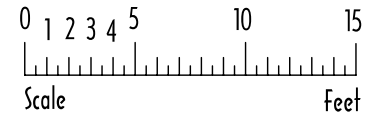
LIZ & JOHN STEVENSON  
Sales Representatives



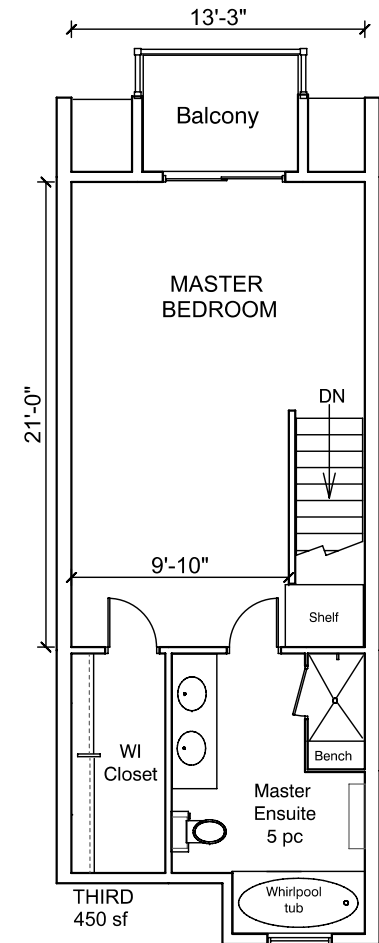
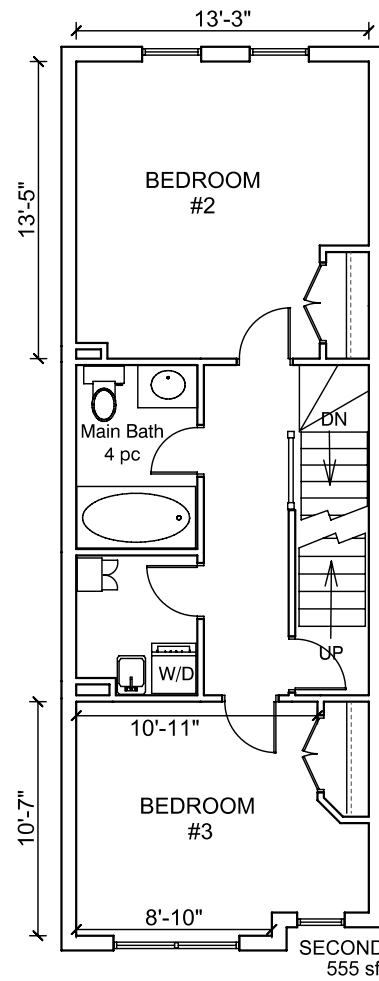
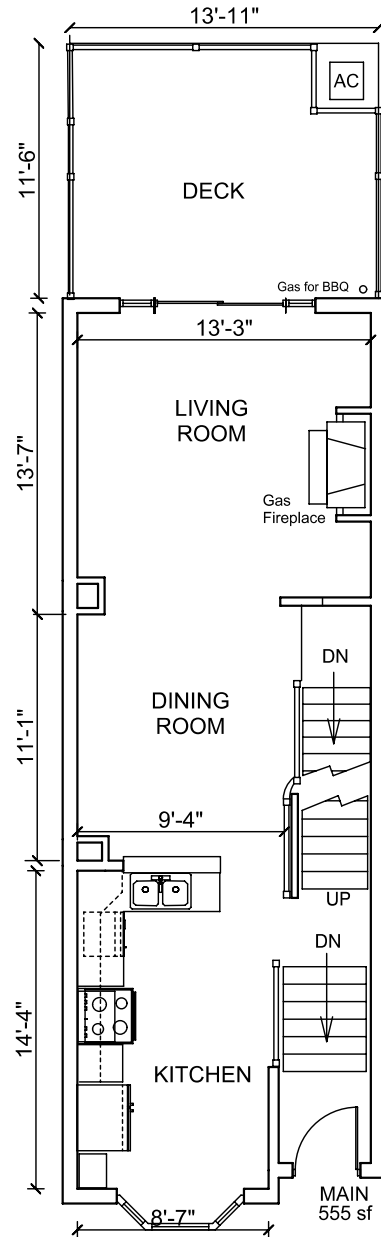
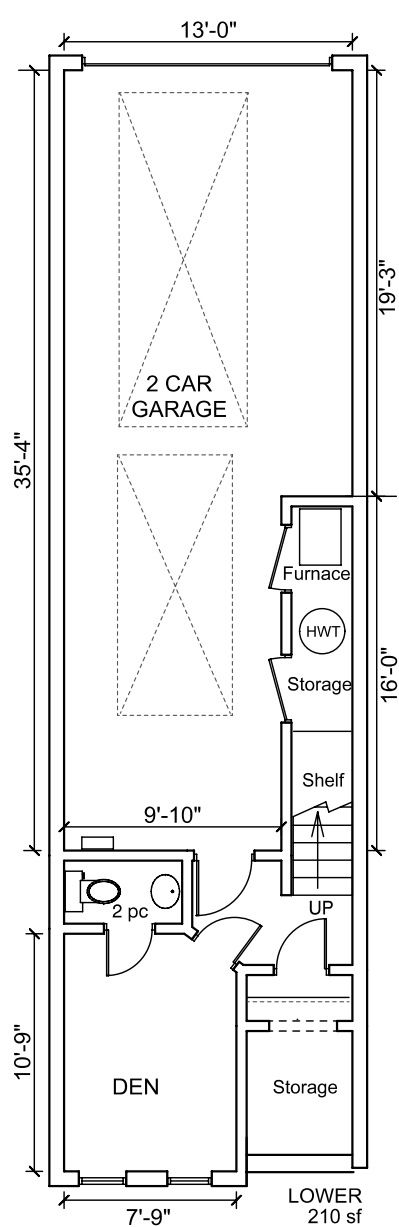
StevensonLINKS.com  
RealEstateRemarkable.ca

Virtual Tour, Photos and Feature Sheet at ...

# 108SixPoint.com



Plan, Area and Dimensions are Approximate.  
Provided as a convenience and guideline only.  
Copyright by John Stevenson (416) 233-8657



TOTAL above grade, heated space is 1770 sf approx