

**ROYAL LEPAGE**

416.236.1871

**LIZ + JOHN STEVENSON**

Sales Representatives

Royal LePage Real Estate Services Ltd.

Brokerage

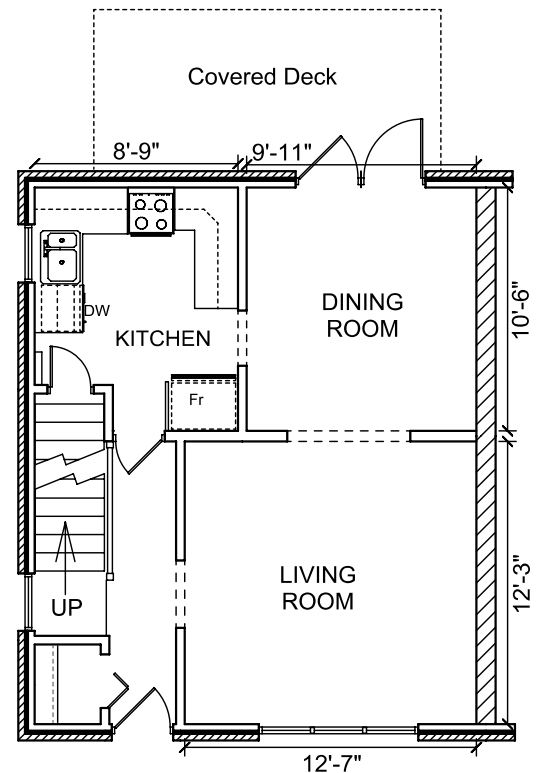
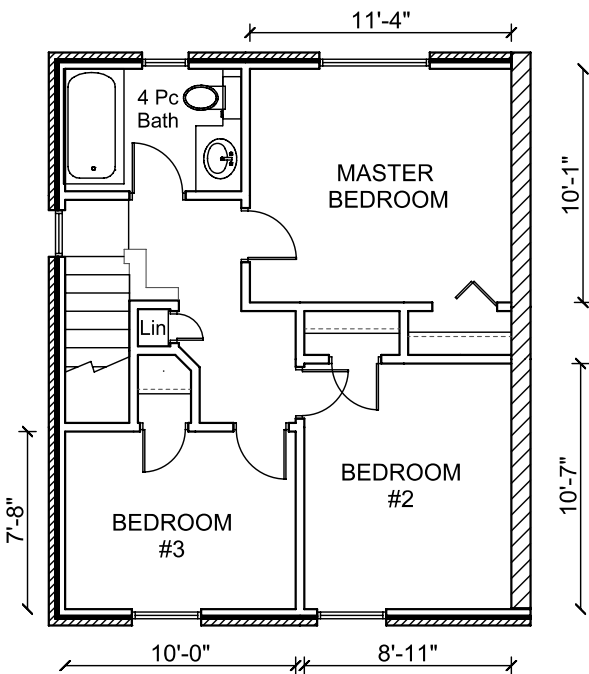
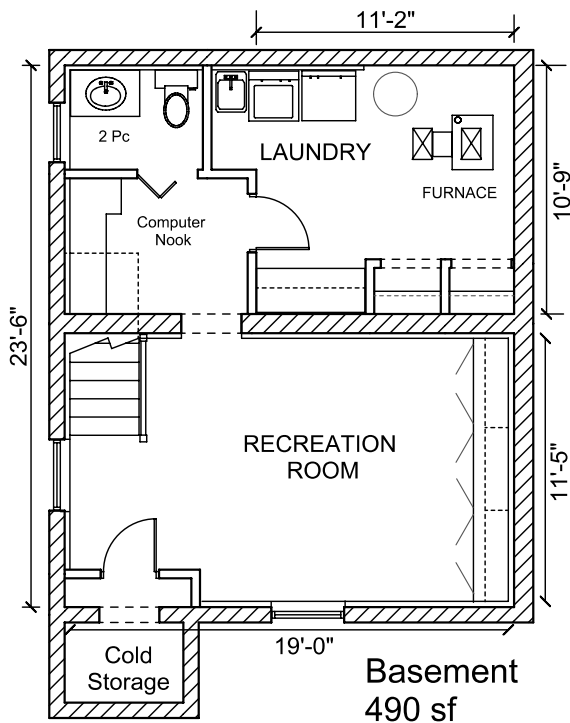
www.RealEstateRemarkable.ca

Virtual Tour, Photos and Feature Sheet at ...

**24Allanbrooke.com**

**Approx Areas:**

Second Floor	490sf
Ground Floor	490 sf
Above Grade	980 sf
Basement	490 sf



Plan, Area and Dimensions are Approximate.  
 Provided as a convenience and guideline only.  
 Buyers should confirm all critical details.  
 Copyright by John Stevenson (416) 233-8657

