

Virtual Tour, Photos and Feature Sheet at ...

29Tromley.com

Plan, Area and Dimensions are Approximate.
Provided as a convenience and guideline only.
Copyright by John Stevenson (416) 233-8657

ROYAL LEPAGE

416.236.1871

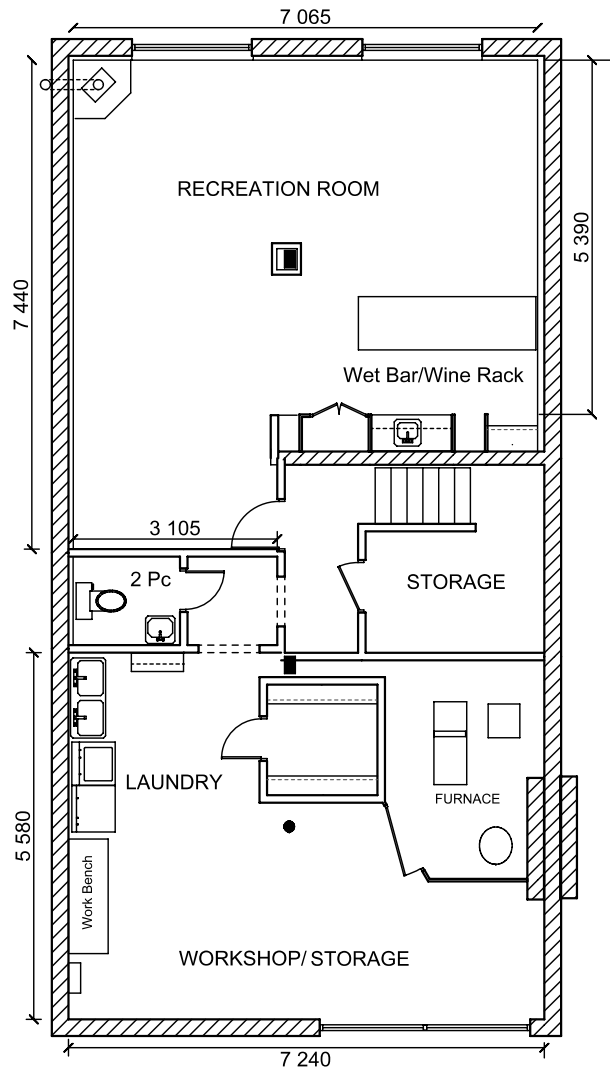
LIZ + JOHN STEVENSON

Sales Representatives

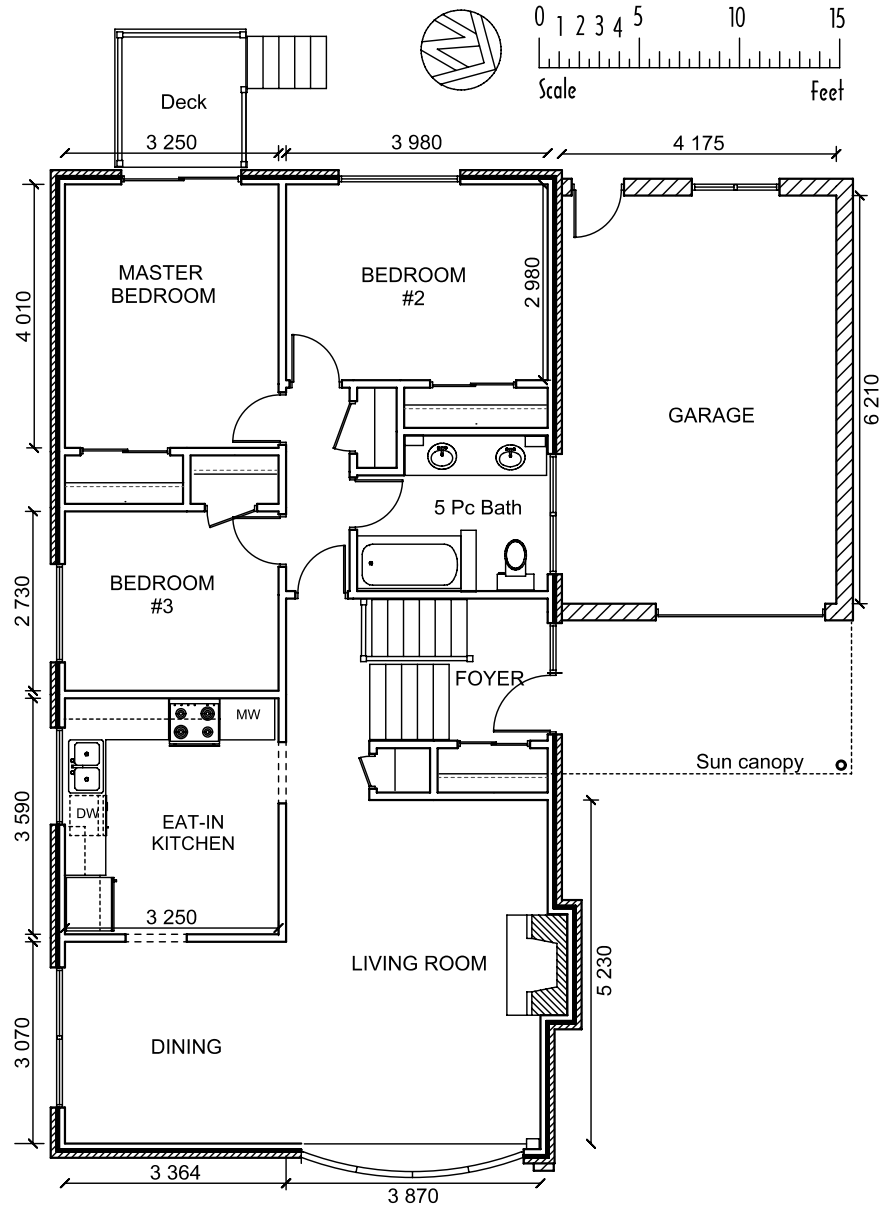
Royal LePage Real Estate Services Ltd.

Brokerage

www.RealEstateRemarkable.ca



Basement
1,190 sf



Ground Floor
1,190sf