

Virtual Tour, Photos and Feature Sheet at ...

15WestDeane.com

15-2 West Deane Park Drive

LIZ & JOHN STEVENSON

Sales Representatives

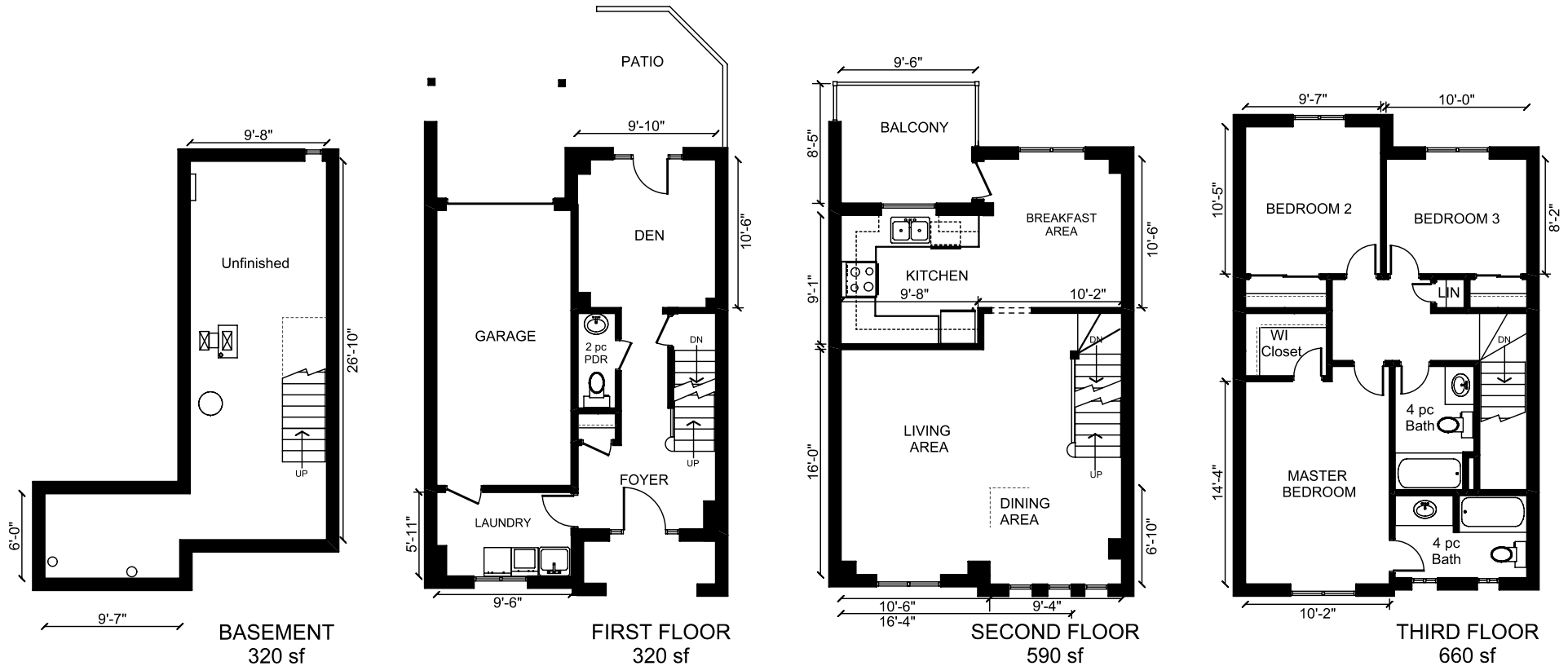
StevensonLINKS.com

RealEstateRemarkable.ca

ROYAL LEPAGE

Real Estate Services Ltd. Brokerage

416.236.1871



Plan, Area and Dimensions are Approximate.
 Provided as a convenience and guideline only.
 Copyright by John Stevenson (416) 233-8657

ABOVE GRADE TOTAL:	1,570 sf
UNFINISHED BASEMENT:	320 sf
TOTAL HEATED SPACE:	1,890 sf

