

Signature Collection

A New Standard of Sophistication – Indulge Yourself with the Very Best Life Has to Offer

- Solid core entry door with elegant hardware
- Suite entry closet featuring mirrored sliding doors*
- Paneled interior passage doors* with elegant hardware
- Wood baseboards and door casings
- Thermally insulated energy efficient windows
- Four (4) black or white kitchen appliances
- White stacked washer and dryer, including an Energy Star™ front-loading washer
- White vertical blinds

The Kitchen – A Gourmet’s Delight

- Choice of Luxe Signature kitchen cabinetry with additional shelf counter, extra storage and granite countertops
- Ceramic tile backsplash
- Stainless steel sink
- Single lever faucet
- Energy Star™ 18 cubic foot frost free refrigerator
- Above range microwave with built-in fan vented to exterior
- Self-cleaning range with glass cooktop
- Energy Star™ built-in dishwasher

The Bath – Pamper Yourself with the Finer Things in Life

- Luxe Signature custom designer vanity cabinetry with cultured marble countertop and drop-in china basin
- Full width vanity mirror with custom designer décor wall lighting fixture
- Full-height ceramic tile bathroom enclosure with choice of one (1) accent tile colour
- Temperature controlled pressure balanced shower faucets
- Exhaust fan vented to exterior

Floor Coverings – Attention to the Smallest of Details

- Choice of exquisite porcelain tiles in Foyer, Kitchen/Breakfast Area*, Ensuite and Main Bathroom
- Choice of engineered wood flooring in Living Room and Dining Room
- Choice of 40oz. broadloom carpeting in Den* and Bedroom(s)

Security and Monitoring Systems – For Your Peace of Mind

- 24 hour Concierge monitors strategically placed surveillance cameras and two way voice communication stations with call buttons in common areas and garage
- Personally coded suite intrusion alarm system, with suite door contact and keypad connected to Concierge desk
- Personal remote panic alarm on key chain for use in garage
- Hardwired in-suite smoke detectors
- In-suite fire alarm with heat sensors
- Controlled access to the Luxe Club, with private resident access
- Carbon monoxide detection systems in all suites

Comfort Control Systems – Control Your Personal Environment

- Individually controlled heating and air conditioning for year round comfort

Electrical & Interconnectivity Systems – Flexibility Built into Every Home

- Individual service panel with circuit breakers
- Pre-wired for Cable T.V. and conduits for telephone
- White Decora designer series receptacles and switches throughout
- Distinctive ceiling fixture in Foyer, Kitchen/Breakfast Area*, Interior Den*, Hallways* and Walk-In closets*
- Capped ceiling outlet in Dining Room

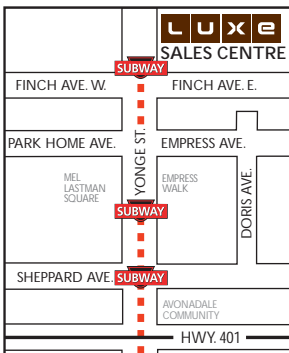
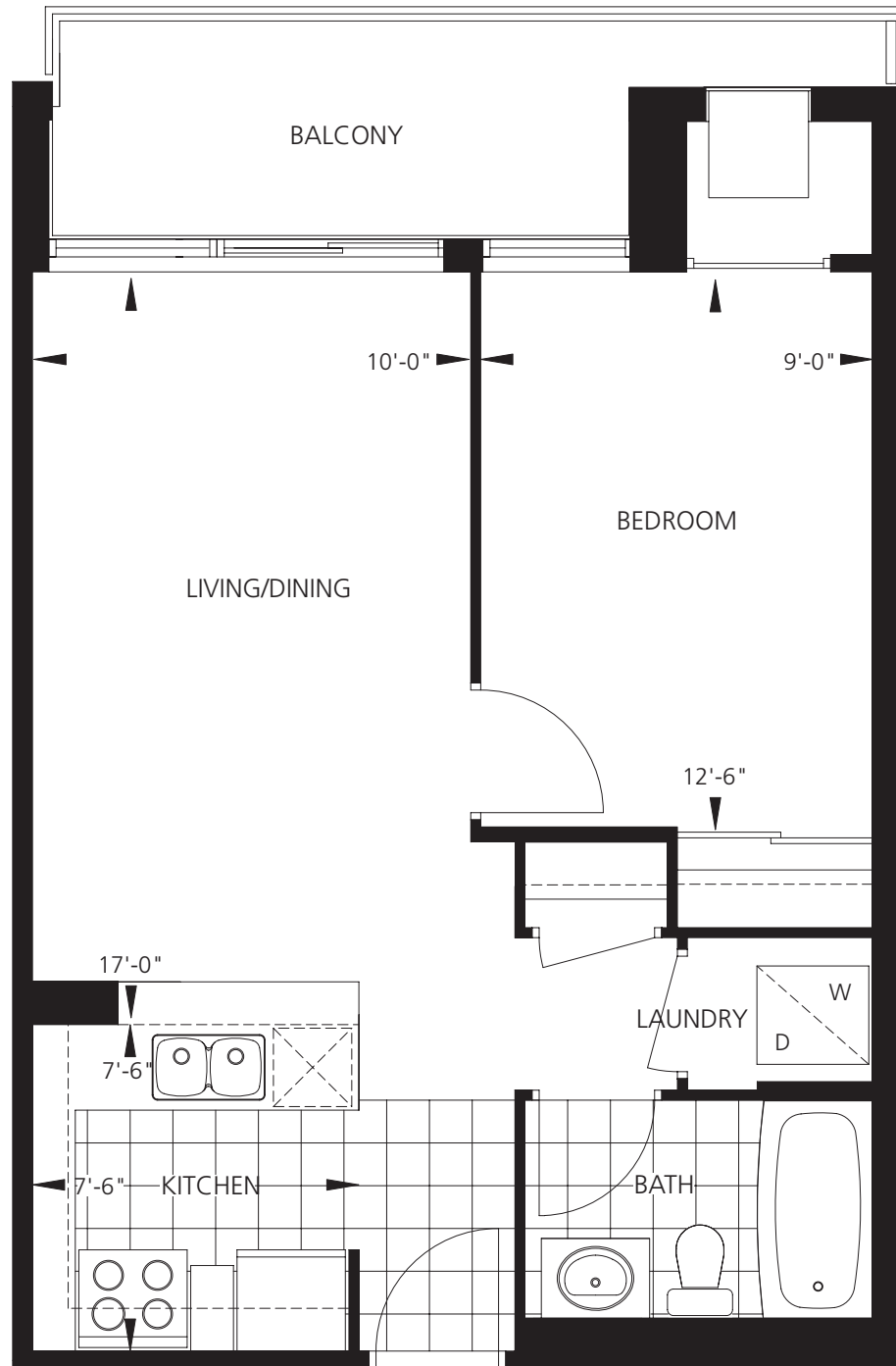
Menkes M-Link – At Home with Tomorrow’s Technology Today

- Luxe’s building infrastructure utilizes Menkes exclusive M-Link design to meet tomorrow’s needs
- Suites are designed to handle the latest technology, with the M-Link Gateway that can support simple networking and additional telephone lines for fax and high speed data transfer
- Multi-port capability to support telephone, television and computer(s) within suites to meet resident personal requirements

* where applicable based on individual floor plan

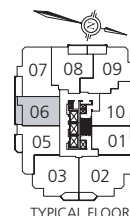


- Kitchen granite countertops, engineered wood flooring and 6 black or white appliances
- Right at the Yonge & Finch Subway station
- Close to shops, supermarkets, restaurants, cinemas and theatre
- Contemporary styled lobby with 24 hour Concierge
- Landscaped courtyard entry
- Luxe club with full recreation Centre including an indoor swimming pool



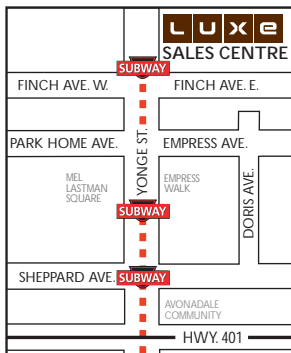
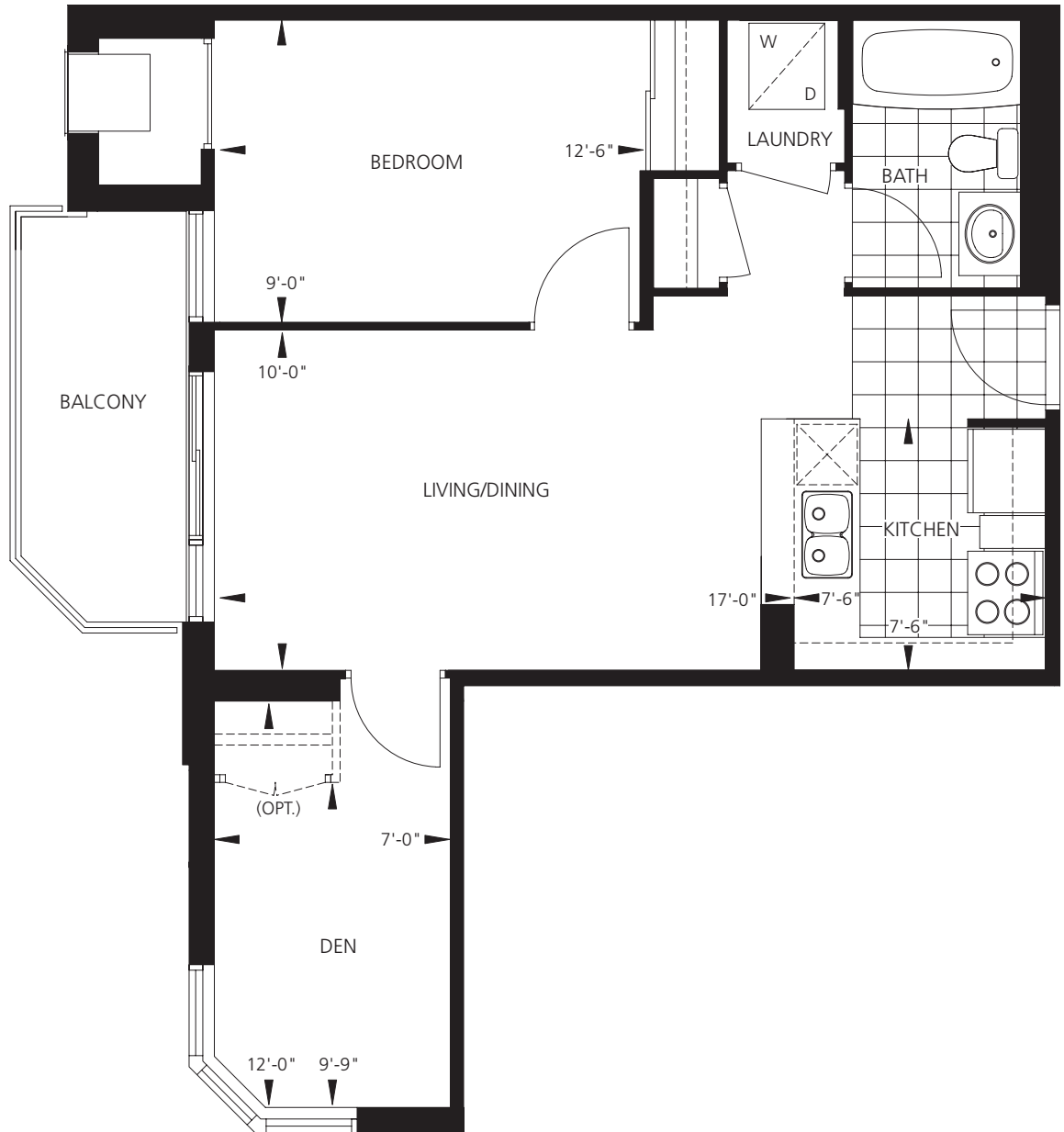
LUXE CONDOMINIUM SALES CENTRE

5793 Yonge Street,
north of Finch Avenue
(416) 730-9722



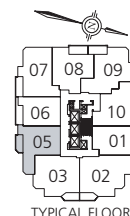


- Kitchen granite countertops, engineered wood flooring and 6 black or white appliances
- Right at the Yonge & Finch Subway station
- Close to shops, supermarkets, restaurants, cinemas and theatre
- Contemporary styled lobby with 24 hour Concierge
- Landscaped courtyard entry
- Luxe club with full recreation Centre including an indoor swimming pool



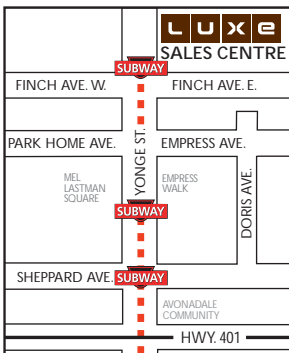
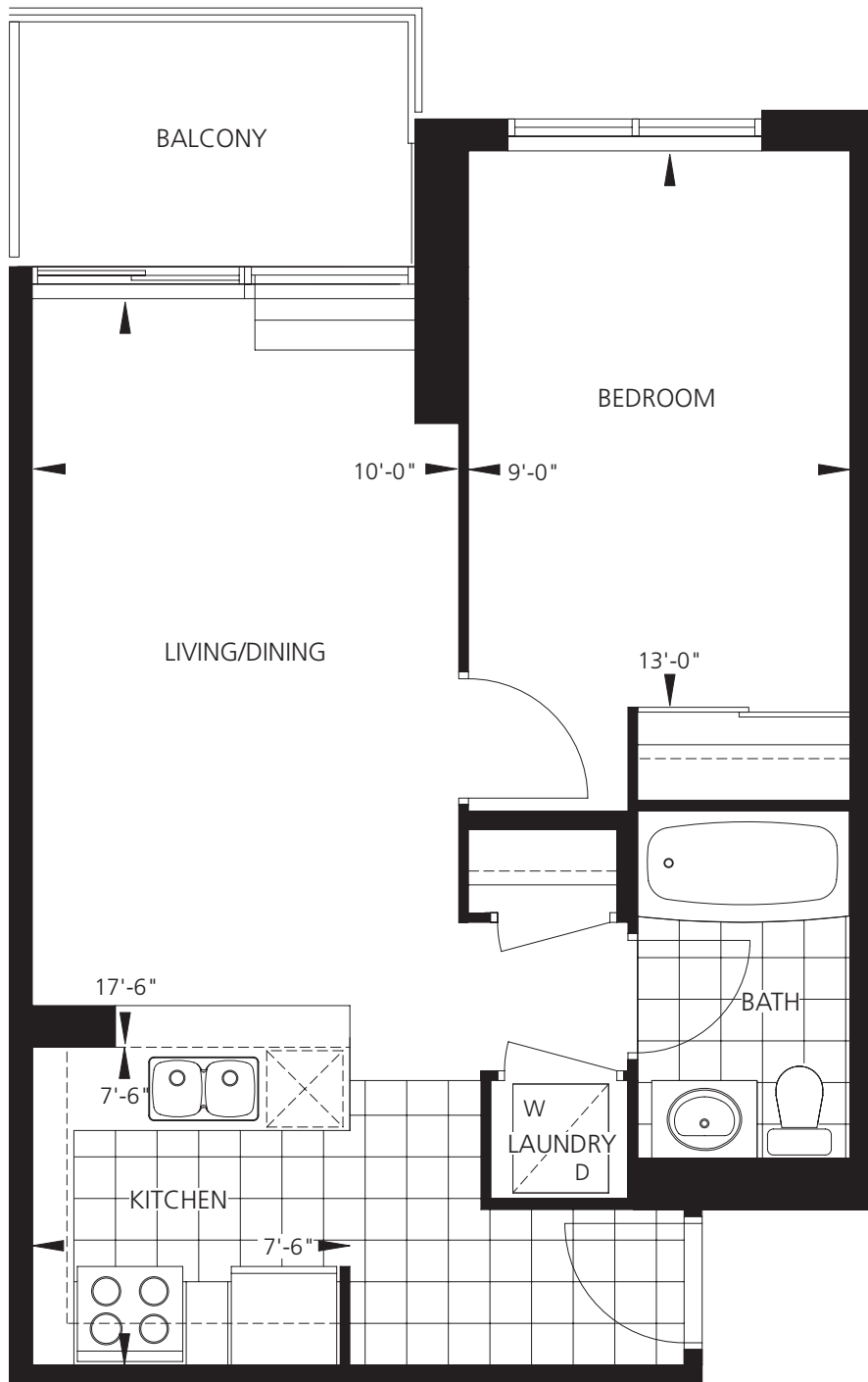
LUXE CONDOMINIUM SALES CENTRE

5793 Yonge Street,
north of Finch Avenue
(416) 730-9722



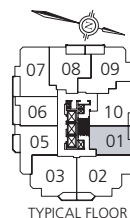


- Kitchen granite countertops, engineered wood flooring and 6 black or white appliances
- Right at the Yonge & Finch Subway station
- Close to shops, supermarkets, restaurants, cinemas and theatre
- Contemporary styled lobby with 24 hour Concierge
- Landscaped courtyard entry
- Luxe club with full recreation Centre including an indoor swimming pool



LUXE CONDOMINIUM SALES CENTRE

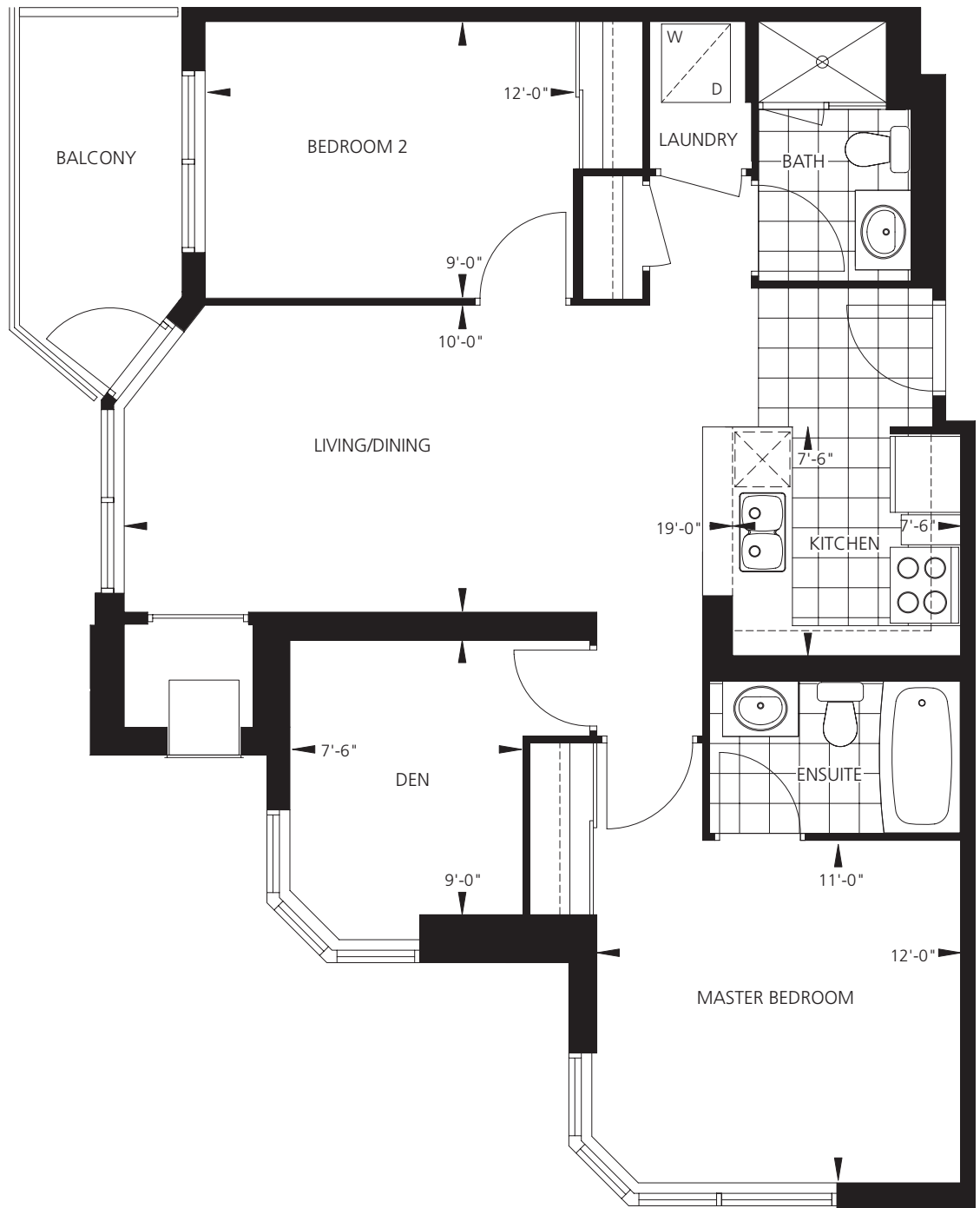
5793 Yonge Street,
north of Finch Avenue
(416) 730-9722



TYPICAL FLOOR

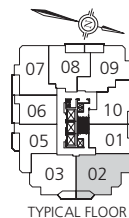


- Kitchen granite countertops, engineered wood flooring and 6 black or white appliances
- Right at the Yonge & Finch Subway station
- Close to shops, supermarkets, restaurants, cinemas and theatre
- Contemporary styled lobby with 24 hour Concierge
- Landscaped courtyard entry
- Luxe club with full recreation Centre including an indoor swimming pool



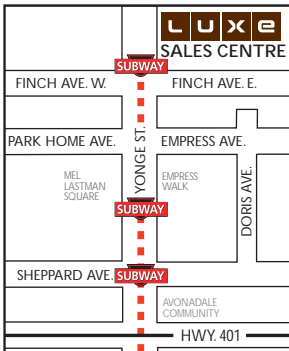
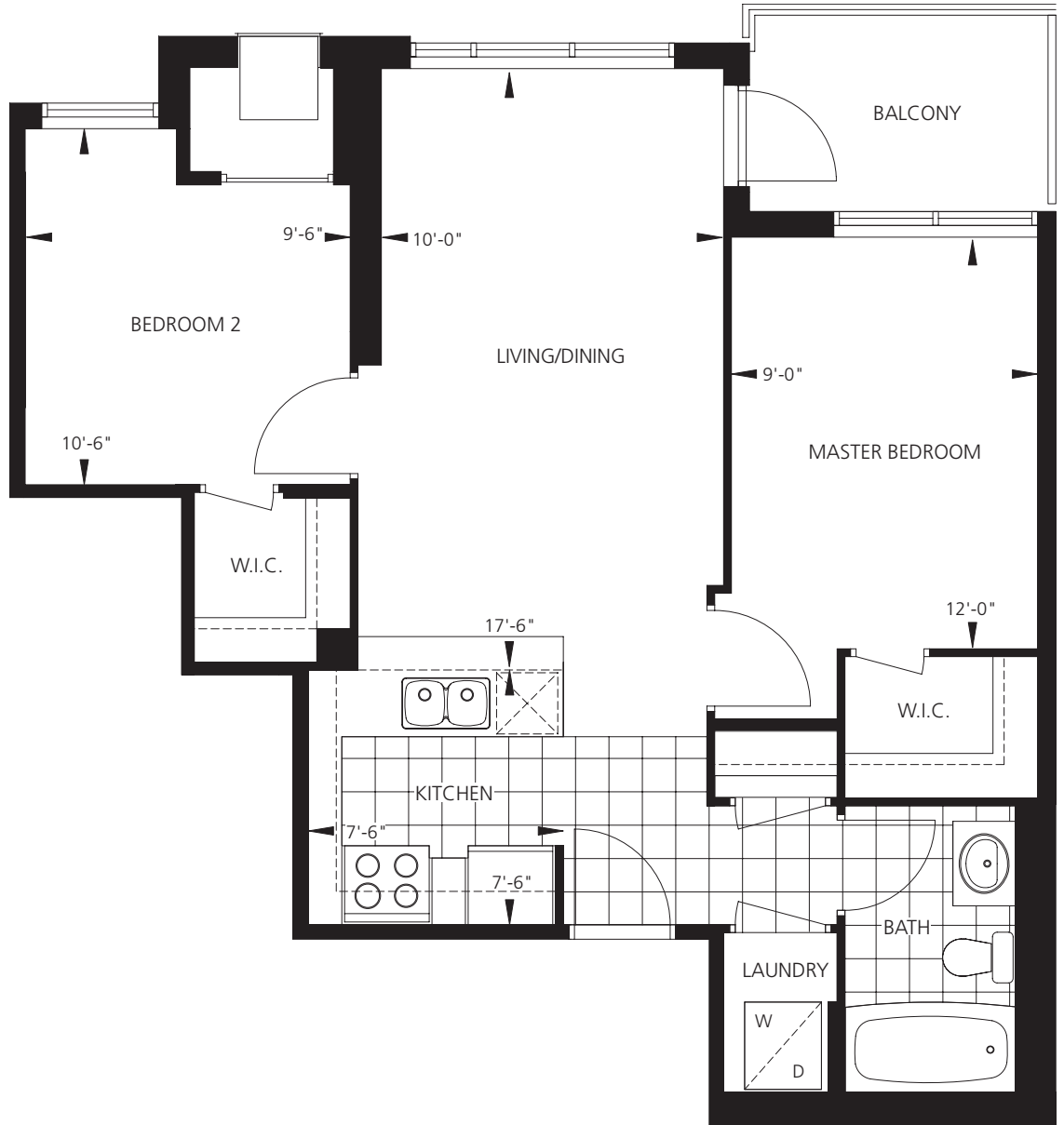
LUXE CONDOMINIUM SALES CENTRE

5793 Yonge Street,
north of Finch Avenue
(416) 730-9722



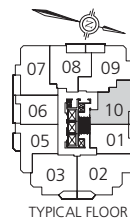


- Kitchen granite countertops, engineered wood flooring and 6 black or white appliances
- Right at the Yonge & Finch Subway station
- Close to shops, supermarkets, restaurants, cinemas and theatre
- Contemporary styled lobby with 24 hour Concierge
- Landscaped courtyard entry
- Luxe club with full recreation Centre including an indoor swimming pool



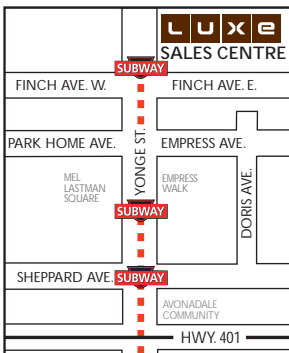
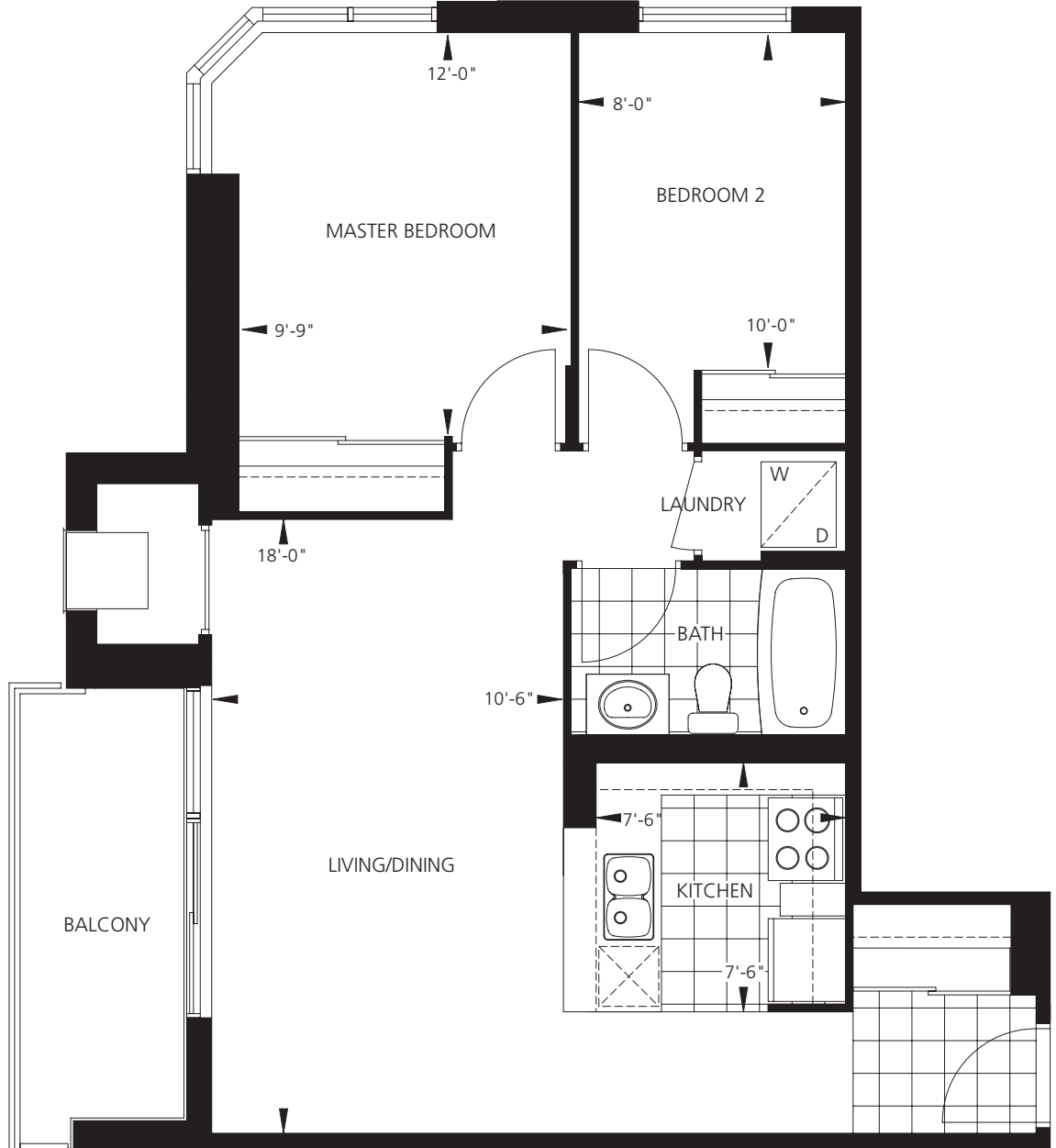
LUXE CONDOMINIUM SALES CENTRE

5793 Yonge Street,
north of Finch Avenue
(416) 730-9722



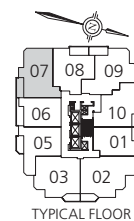


- Kitchen granite countertops, engineered wood flooring and 6 black or white appliances
- Right at the Yonge & Finch Subway station
- Close to shops, supermarkets, restaurants, cinemas and theatre
- Contemporary styled lobby with 24 hour Concierge
- Landscaped courtyard entry
- Luxe club with full recreation Centre including an indoor swimming pool



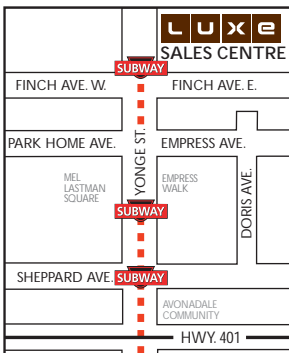
LUXE CONDOMINIUM SALES CENTRE

5793 Yonge Street,
north of Finch Avenue
(416) 730-9722



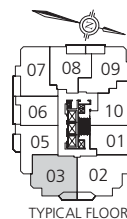


- Kitchen granite countertops, engineered wood flooring and 6 black or white appliances
- Right at the Yonge & Finch Subway station
- Close to shops, supermarkets, restaurants, cinemas and theatre
- Contemporary styled lobby with 24 hour Concierge
- Landscaped courtyard entry
- Luxe club with full recreation Centre including an indoor swimming pool



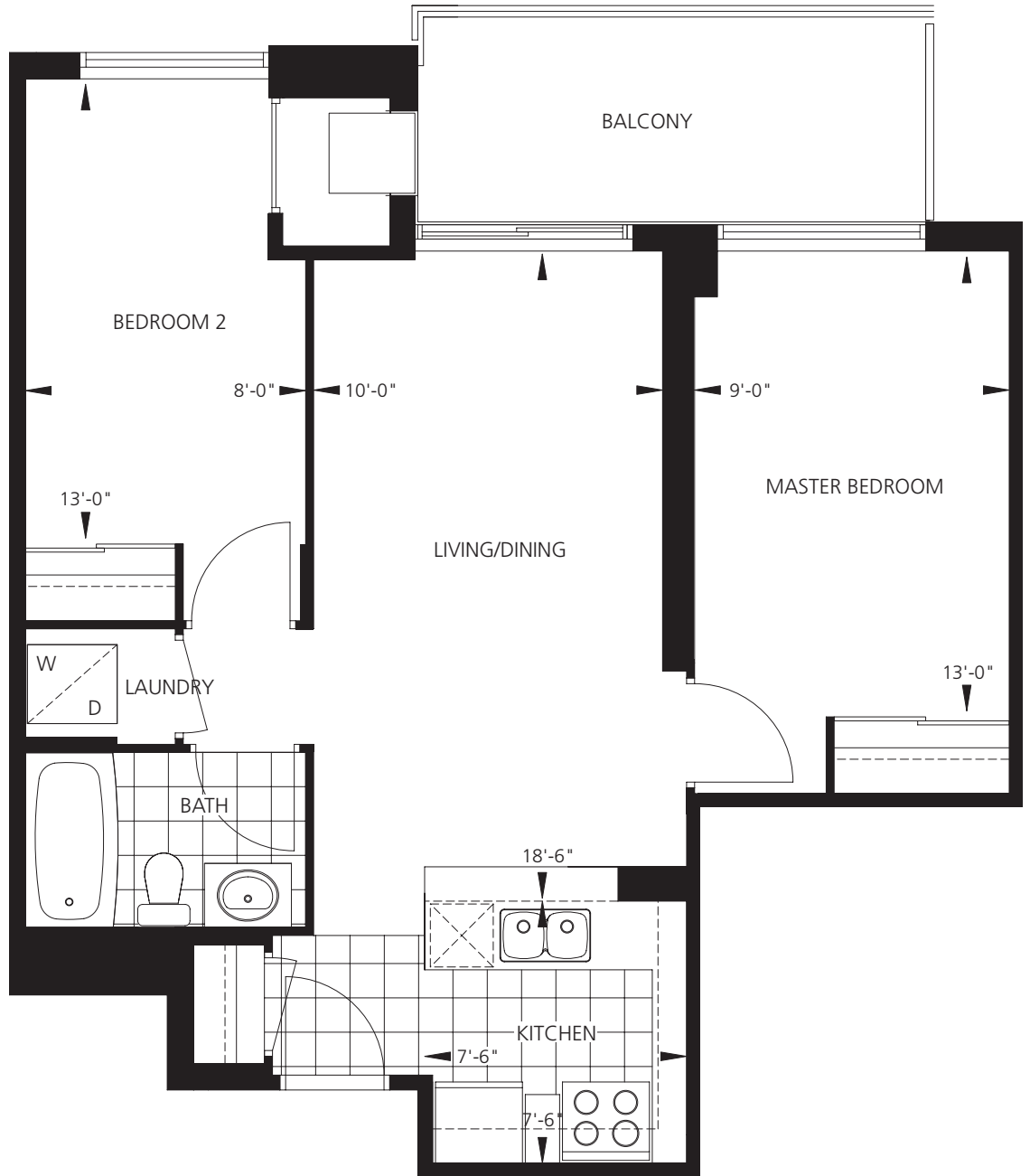
LUXE CONDOMINIUM SALES CENTRE

5793 Yonge Street,
north of Finch Avenue
(416) 730-9722



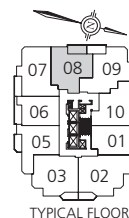


- Kitchen granite countertops, engineered wood flooring and 6 black or white appliances
- Right at the Yonge & Finch Subway station
- Close to shops, supermarkets, restaurants, cinemas and theatre
- Contemporary styled lobby with 24 hour Concierge
- Landscaped courtyard entry
- Luxe club with full recreation Centre including an indoor swimming pool



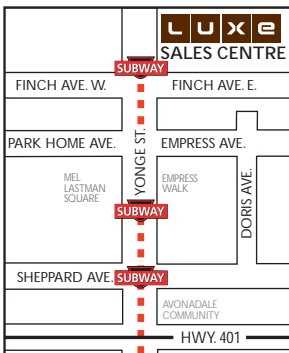
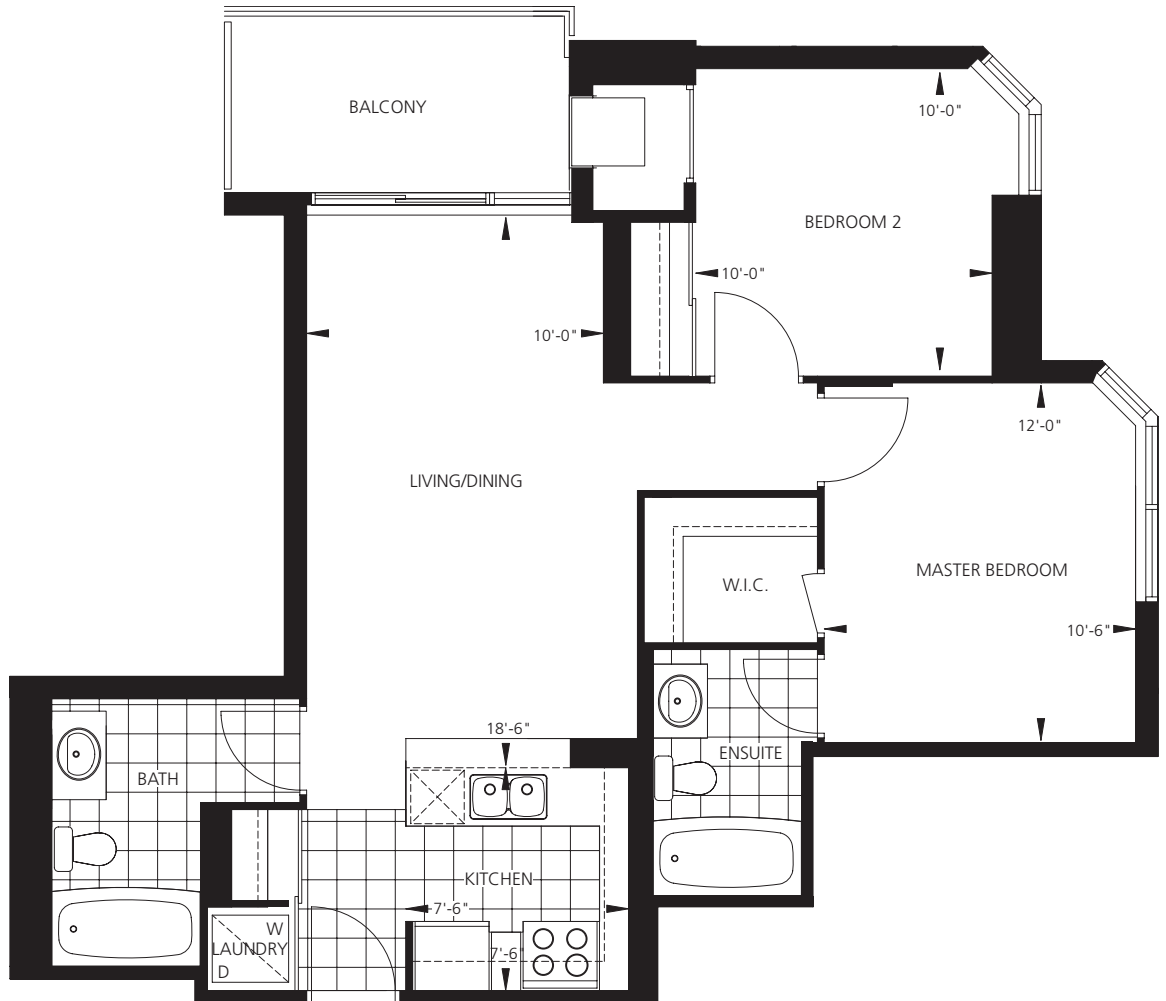
LUXE CONDOMINIUM SALES CENTRE

5793 Yonge Street,
north of Finch Avenue
(416) 730-9722



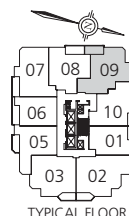


- Kitchen granite countertops, engineered wood flooring and 6 black or white appliances
- Right at the Yonge & Finch Subway station
- Close to shops, supermarkets, restaurants, cinemas and theatre
- Contemporary styled lobby with 24 hour Concierge
- Landscaped courtyard entry
- Luxe club with full recreation Centre including an indoor swimming pool



LUXE CONDOMINIUM SALES CENTRE

5793 Yonge Street,
north of Finch Avenue
(416) 730-9722







Just north of the Yonge and Finch Subway, a private driveway wraps around LUXE. A soothing water wall feature flows softly, with a landscaped trellis leading to its chic central lobby. Steps from the driveway, the Luxe Outdoor Lounge offers a tranquil setting for quiet moments and alfresco entertaining. It's a fresh take on integrating community with nature.



